



LENA BERGSTRÖM FOR DESIGNERS EYE

Product: Cushion Nightflower and ONO

Made of pure wool.

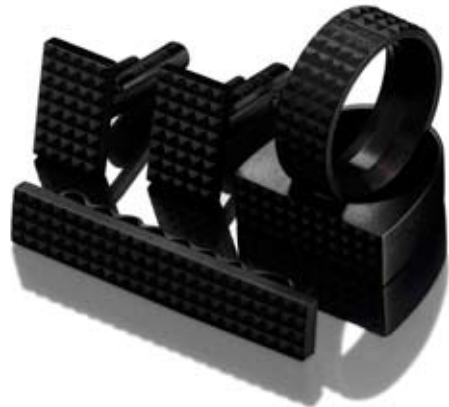
Design: Lena Bergström

A designer of both textiles and glass. Her work represents a new generation of design, with clean but soft lines and strong confidence in expression. She is represented at museums, exhibited around the world, and is a numerous recipient of the Excellent Swedish Design Award for her inspirational work with Designers Eye as well as for her glass collections for Orrefors.

Producer: Designers Eye

Designer's Eye, founded in 1997, is a textile design company with all design and production in Sweden. You can find their woolen products in upmarket interior decorating shops and design shops all over the world. Their design is contemporary Scandinavian with clean lines and unique patterns. Products range from blankets and pillows to room dividers and table wear in various combinations of colour. With an emphasis on quality and design, the collection is a three-time recipient of the Excellent Swedish Design Award

www.designerseye.se



FORM US WITH LOVE

Form Us With Love- FUWL - is a young design studio of three: Petrus Palmér, John Löfgren and Jonas Pettersson, focusing on innovative product, furniture and lighting design. Form Us With Love works from their office and showroom in Old Town, Stockholm with Swedish and international customers as Design House Stockholm, Nordic Light Hotel, Materia and Zero.

With exhibitions around the world Form Us With Love has attracted media for their innovative design. FUWL has also been awarded with the prestigious Red Dot Design Award and the Young Swedish design award 06/07.

www.formuswithlove.se



FRONT FOR ZERO

Product: Camouflage pendant.

The lamp Camouflage designed by Front for Zero has attracted a lot of attention. The large globe influences its surroundings as light and shadow from the lampshade form patterns in the room.

The enormous globe has been pressure turned and then perforated by three-dimensional laser cutting – a technique which is frequently used in the motor industry. The result is an imposingly large globe that influences its surroundings thanks to its compass.

Designers

FRONT is a design group of four: Sofia Lagerkvist, Charlotte von der Lancken, Anna Lindgren and Katja Sävström. They work as a group where all members are involved in the design process from initial discussions and ideas to final product. Their works are based on common discussions, exploring and investigations about different topics. And the final products often communicates a story to the observer about the design process, about conventions within the product field or about the material it is made of.

www.frontdesign.se

Producer: Zero Interiör

Since 1978 Zero manufactures lighting with the highest quality and designed by famous Scandinavian designers such as Börge Lindau, Per Sundstedt, Bengt Källgren, Pelican & Co and Thomas Sandell. 1989 Zero acquired the Glass mill Pukeberg and its tradition within glass manufacturing. Today Pukeberg holds more than these companies. The University of Kalmar has started its Design Management education at Pukeberg which also locates the Archive for Swedish form.

www.zero.se



CLAESSON KOIVISTO RUNE FOR GALLERY PASCALE

Product: Bracelet Eve

The well known Swedish architects and designers Claesson Koivisto Rune created a jewellery for Collection Pascale. The bracelet Eve is formed of extruded aluminium.

Design

Claesson Koivisto Rune - The Swedish design partnership Claesson Koivisto Rune – CKR- was founded in 1995 as an architectural office but is, in the classic Scandinavian way multi-disciplinary, which means that they practice both architecture and design.

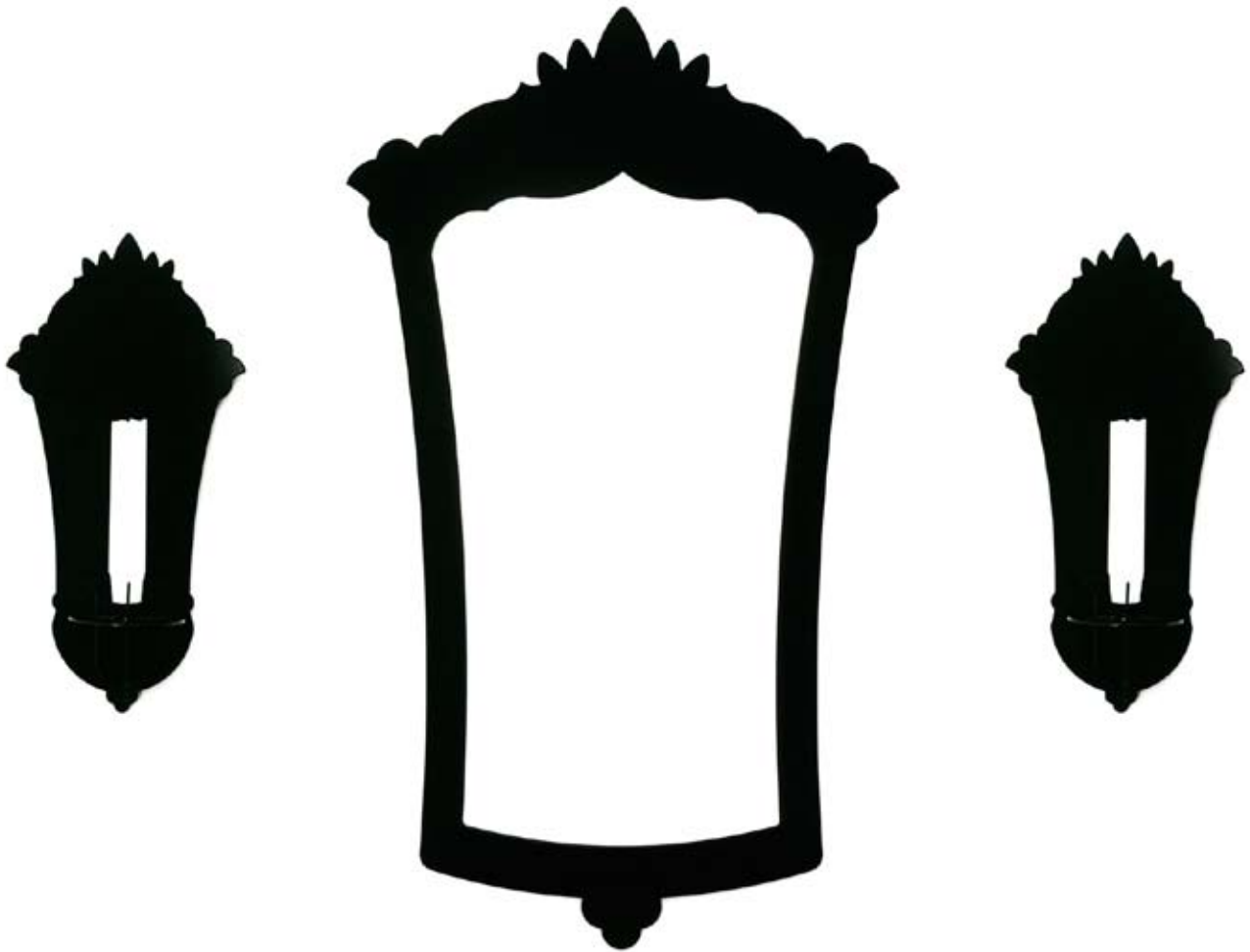
www.ckr.se

Producent: Gallery Pascale

Gallery Pascale - one of Stockholm's first design galleries, founded by the owner Pascale Cottard Olsson 1998. Collection Pascale is a small, exclusive, swedish made collection of products in a personal and modern Swedish design – "products that you really would like in your home". The products are designed by well known Swedish designers; Claesson Koivisto Rune, Lena Bergtröm, Björn Dahlström, Monica Förster, Owe Gustafson, Anne Lerinder, Alexander Lervik, Ulrika Mårtensson, Anna von Schewen, Barbro Wesslander, Lotta Kühlnhorn and Ola Wihlborg.

The collection has attracted a lot of attention and contains interior design objects for you who appreciate modern, unique design that you don't find in every home.

www.gallerypascale.se



OLA WIHLBORG FOR GALLERY PASCALE

Product: Mirror Coulisse

In black or white lacquered metal

Design

Ola Wihlborg

www.wihlborgdesign.se

Producent: Gallery Pascale

Gallery Pascale - one of Stockholm's first design galleries, founded by the owner Pascale Cottard Olsson 1998. Collection Pascale is a small, exclusive, swedish made collection of products in a personal and modern Swedish design – "products that you really would like in your home". The products are designed by well known Swedish designers; Claesson Koivisto Rune, Lena Bergström, Björn Dahlström, Monica Förster, Owe Gustafson, Anne Lerinder, Alexander Lervik, Ulrika Mårtensson, Anna von Schewen, Barbro Wesslander, Lotta Köhlhorn and Ola Wihlborg.

The collection has attracted a lot of attention and contains interior design objects for you who appreciate modern, unique design that you don't find in every home.

www.gallerypascale.se



ALEXANDER LERVIK FOR GALLERY PASCALE

Product: Shadow

A candle holder that plays with the shadows. A distinct star is formed when the candle is lit and as the candle burns down the star grows outwards. The candle holder is made from lacquered laser cut steel.

Design

Alexander Lervik - Born in Stockholm, Sweden in 1972. Started out in design as a carpenter apprentice for two years. (1993-1994). Studied three years of product and interior design at Beckmans School of Design (1995-1998). Alexander Lervik is represented at the renowned National Museum in Stockholm.

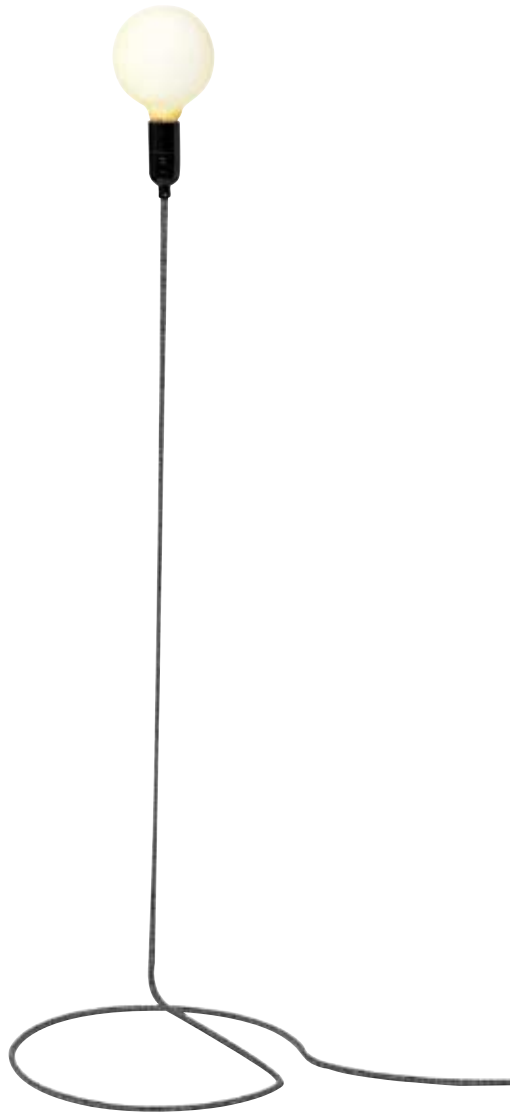
www.lervik.se

Producent: Gallery Pascale

Gallery Pascale - one of Stockholm's first design galleries, founded by the owner Pascale Cottard Olsson 1998. Collection Pascale is a small, exclusive, swedish made collection of products in a personal and modern Swedish design – "products that you really would like in your home". The products are designed by well known Swedish designers; Claesson Koivisto Rune, Lena Bergström, Björn Dahlström, Monica Förster, Owe Gustafson, Anne Lerinder, Alexander Lervik, Ulrika Mårtensson, Anna von Schewen, Barbro Wesslander, Lotta Köhlhorn and Ola Wihlborg.

The collection has attracted a lot of attention and contains interior design objects for you who appreciate modern, unique design that you don't find in every home.

www.gallerypascale.se



FORM US WITH LOVE FOR DESIGN HOUSE STOCKHOLM

Product: Cord Lamp

The Cord Lamp is simple, yet characteristic. The cord, usually one of the most disturbing décor details, has been made useful and attractive.

Design

Form Us With Love - FUWL - is a young design studio of three: Petrus Palmér, John Löfgren and Jonas Pettersson, focusing on innovative product, furniture and lighting design.

www.formuswithlove.se

Producer

Design House Stockholm is a leading producer of contemporary Scandinavian design. They work with independent designers producing everything from tableware and lighting to furniture and textiles, the company develops functional, design products of timeless appeal. Sought after by some of the top design retailers in the world, Design House Stockholm products are available on global scale both in the company's own stores and at prominent retail partners worldwide.

www.designhousstockholm.com



MARIE-LOUISE GUSTAFSSON FOR DESIGN HOUSE STOCKHOLM

Product: Carrie

Carrie is a unique bike basket for the urban cyclist. Designer Marie-Louise Gustafsson selected the ornate material as it reminded her of the Swedish crochet tablecloths on which her grandmother used to serve afternoon tea. Carrie also doubles as a shopping basket.

Design

Marie-Louise Gustafsson - educated at the University College of Arts, Crafts and Design in Stockholm where she studied a degree in industrial design. She also studied at the Royal College of Art, London, where she earned a MA Degree in product design. She spent a year in Japan as an exchange student in the Tohoku University College of Arts and Design.

www.marielouise.se

Producer

Design House Stockholm is a leading producer of contemporary Scandinavian design. They work with independent designers producing everything from tableware and lighting to furniture and textiles, the company develops functional, design products of timeless appeal. Sought after by some of the top design retailers in the world, Design House Stockholm products are available on global scale both in the company's own stores and at prominent retail partners worldwide.

www.designhousethstockholm.com



LAMINO BY SWEDESE

Product: Lamino

Voted "the 20th Century's Best Swedish Furniture Design" at the turn of the millennium!

Design

Yngve Ekström, founder of Swedese

Producer

Swedese is a classic Swedish furniture producer with a strong anchor in both the public and domestic domain. Swedese was founded in 1945 by the two brothers Yngve and Jerker Ekström and Sven Bertil Sjöqvist, with Yngve leading the company until his death. The present owner of Swedese is Mrs. Elisabeth Johansson. The headquarters are located to Vaggeryd in Småland, Sweden, where one of the factories can be found. The second factory is located in Äng, a small village outside Nässjö, Sweden.

www.swedese.se



MICHAEL BIHAIN FOR SWEDESE

Product: Libri

Libri shelf received the '+1 Award' at the Stockholm Furniture Fair, "Best New Product Design 2008". Libri is a storage solution suitable for our nomadic lifestyle. Libri can be used as a solitary shelf or which can be combined with additional Libri shelves alongside against the wall, back to back thus becoming free standing or several shelves in a row out from the wall creating a room divider.

Design

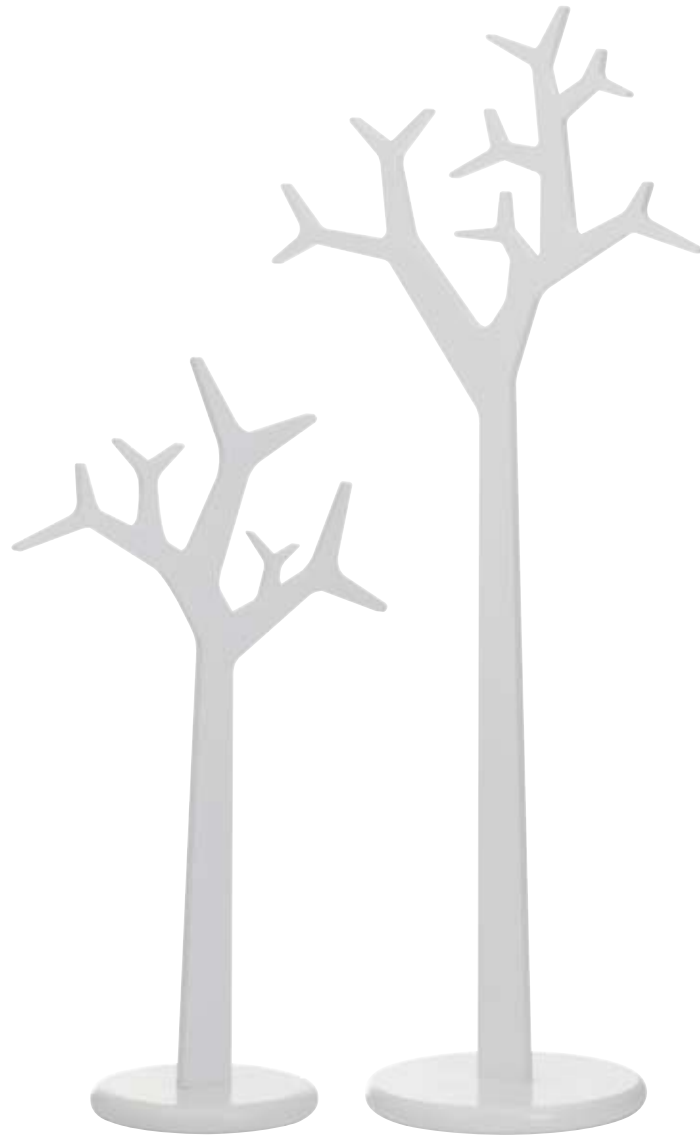
Michael Bihain - Having trained both as a butcher and carpenter, Michael Bihain studied Interior Design at the St Luc Institute in Liège and Hull University. Following his studies he opens his studio BihainProd in London. He is working with different editors on the development of furniture design and accessories. Michaël Bihain also produces some of his work: notably his 'Ondine' park bench. Alongside his professional career as a designer and Interior Architect, Michael is teaching at the St Luc Institute in Liege.

www.michaelbihain.com

Producer

Swedese is a classic Swedish furniture producer with a strong anchor in both the public and domestic domain. Swedese was founded in 1945 by the two brothers Yngve and Jerker Ekström and Sven Bertil Sjöqvist, with Yngve leading the company until his death. The present owner of Swedese is Mrs. Elisabeth Johansson. The headquarters are located to Vaggeryd in Småland, Sweden, where one of the factories can be found. The second factory is located in Äng, a small village outside Nässjö, Sweden.

www.swedese.se



MICHAEL YOUNG OCH KATRIN PETURSDOTTIR FOR SWEDESE

Product: Tree

Standing or wall mounted coat stand

Design

Michael Young och Katrin Petursdottir

Producer

Swedese is a classic Swedish furniture producer with a strong anchor in both the public and domestic domain. Swedese was founded in 1945 by the two brothers Yngve and Jerker Ekström and Sven Bertil Sjöqvist, with Yngve leading the company until his death. The present owner of Swedese is Mrs. Elisabeth Johansson. The headquarters are located to Vaggeryd in Småland, Sweden, where one of the factories can be found. The second factory is located in Äng, a small village outside Nässjö, Sweden.

www.swedese.se



MONICA FÖRSTER FOR SWEDESE

Product: Breeze side table

A modernist-inspired composition, Breeze is softened with a rippled edge on one side of the table top, creating a sense of unexpected vulnerability within the hard edges of the overall design.

Design

Monica Förster - creator of some of the most internationally renowned objects in contemporary Swedish design today, is based in Stockholm but grew up close to the arctic circle in the very north of Sweden. She has been awarded with Excellent Swedish Design, Design Plus in Germany, and was awarded FutureDesignDays Award 2002. She has also been represented in the International Design Yearbook.

www.monicaforster.se

Producer

Swedese is a classic Swedish furniture producer with a strong anchor in both the public and domestic domain. Swedese was founded in 1945 by the two brothers Yngve and Jerker Ekström and Sven Bertil Sjöqvist, with Yngve leading the company until his death. The present owner of Swedese is Mrs. Elisabeth Johansson. The headquarters are located to Vaggeryd in Småland, Sweden, where one of the factories can be found. The second factory is located in Äng, a small village outside Nässjö, Sweden.

www.swedese.se



TOMAS BERNSTRAND FOR SWEDESE

Product: Heaven

Step ladder, free standing.

Design

Tomas Bernstrand - runs his design studio Bernstrand & Co in Stockholm. Thomas is trained at Konstfack, University College of Arts, Crafts & Design in Stockholm, 1994-1999, Danmarks Designskole, 1996, and the Royal Academy of Fine Arts in Stockholm, 2005-2006. For his work he has received the following design prizes and awards: Excellent Swedish Design (twice), the Spanish cDIM Design Award 2004, Ann Wall Design Prize 2005, Sköna Hem Furniture of the Year, 2005, and Imm Interior Innovations Award (Germany), 2005.

www.bernstrand.se

Producer

Swedese is a classic Swedish furniture producer with a strong anchor in both the public and domestic domain. Swedese was founded in 1945 by the two brothers Yngve and Jerker Ekström and Sven Bertil Sjöqvist, with Yngve leading the company until his death. The present owner of Swedese is Mrs. Elisabeth Johansson. The headquarters are located to Vaggeryd in Småland, Sweden, where one of the factories can be found. The second factory is located in Äng, a small village outside Nässjö, Sweden.

www.swedese.se



OLA WIHLBORG FOR ASPLUND

Product: Code baskets

Baskets in powder coated steel

Design

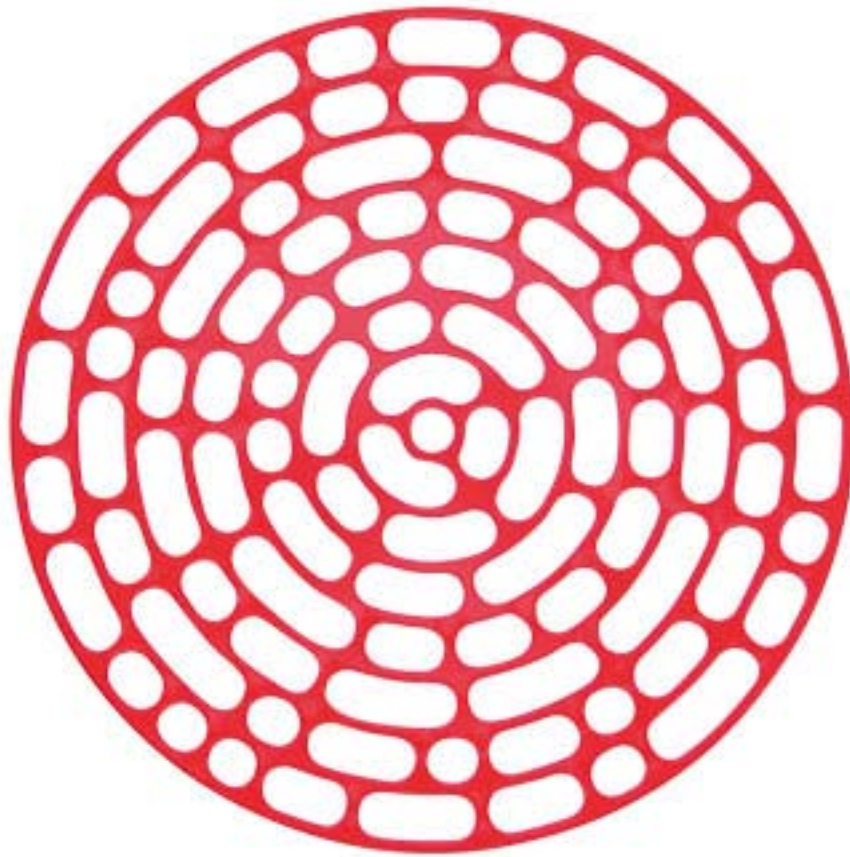
Ola Wihlborg

www.wihlborgdesign.se

Producer

Asplund - was founded in 1989 by brothers Michael and Thomas Asplund. The company began its life as a gallery showing furniture as objects of art. After a short while, the Asplund brothers noticed that there was a significant demand for simple, high quality Swedish furniture. With this in mind they started working with their designer friends Jonas Bohlin and Thomas Sandell to produce their own range of furniture. Today the Asplund company has three different areas: the Asplund collection, the Asplund Store – a space for an international selection of high- class designed items and a contract department.

www.asplund.org



OLA WIHLBORG FOR ASPLUND

Product: Code plate

Plate in powder coated steel

Design

Ola Wihlborg

www.wihlborgdesign.se

Producer

Asplund - was founded in 1989 by brothers Michael and Thomas Asplund. The company began its life as a gallery showing furniture as objects of art. After a short while, the Asplund brothers noticed that there was a significant demand for simple, high quality Swedish furniture. With this in mind they started working with their designer friends Jonas Bohlin and Thomas Sandell to produce their own range of furniture. Today the Asplund company has three different areas: the Asplund collection, the Asplund Store – a space for an international selection of high-class designed items and a contract department.

www.asplund.org



THOMAS SANDELL FOR ASPLUND

Product: Lucia

Candle holder designed by Thomas Sandell and produced by Asplund since 1998. Made of polished aluminium.

Design

Thomas Sandell - architect SAR and SIR, one of Sweden's most highly acclaimed architects and designers. Renowned for many different buildings, interiors and furniture designs, for clients as Ericsson, IKEA of Sweden, OM HEX, Cappellini, NCC, Zero Interiör and many others.

www.sandellsandberg.se

Producer

Asplund - was founded in 1989 by brothers Michael and Thomas Asplund. The company began its life as a gallery showing furniture as objects of art. After a short while, the Asplund brothers noticed that there was a significant demand for simple, high quality Swedish furniture. With this in mind they started working with their designer friends Jonas Bohlin and Thomas Sandell to produce their own range of furniture. Today the Asplund company has three different areas: the Asplund collection, the Asplund Store – a space for an international selection of high-class designed items and a contract department.

www.asplund.org



STINA SANDWALL FOR ASPLUND

Product: Stella

Timeless candelabra for three candles

Design

Stina Sandwall

www.sandellsandberg.se

Producer

Asplund - was founded in 1989 by brothers Michael and Thomas Asplund. The company began its life as a gallery showing furniture as objects of art. After a short while, the Asplund brothers noticed that there was a significant demand for simple, high quality Swedish furniture. With this in mind they started working with their designer friends Jonas Bohlin and Thomas Sandell to produce their own range of furniture. Today the Asplund company has three different areas: the Asplund collection, the Asplund Store – a space for an international selection of high- class designed items and a contract department.

www.asplund.org



ANNA VON SCHEWEN FOR GÄRSNÄS

Product: Chair TWIST

Seat in veneer and covered in fabric or leather. Stackable.

Design

Anna von Schewen - born 1965, Educated during the years of 1990-1995

Has her own studio in Stockholm since september 1997. Represented in the permanent collections of: Stedelijk Museum of Modern Art Amsterdam, Netherlands and the Nationalmuseum, Stockholm

Producer

Gärsnäs was established in 1893 and is one of Sweden's oldest, still active furniture makers. They manufacture modern, functional furniture of the highest quality for all kinds of environments, products created by prominent designers and architects.

www.garsnas.se



ANNA VON SCHEWEN FOR GÄRSNÄS

Product: Chair HUG

Armchair in beech/natural or stain. Upholstered seat. Chromed frame.

Design

Anna von Schewen - born 1965, Educated during the years of 1990-1995

Has her own studio in Stockholm since september 1997. Represented in the permanent collections of: Stedelijk Museum of Modern Art Amsterdam, Netherlands and the Nationalmuseum, Stockholm

Producer

Gärnsås was established in 1893 and is one of Sweden's oldest, still active furniture makers. They manufacture modern, functional furniture of the highest quality for all kinds of environments, products created by prominent designers and architects.

www.garsnas.se



SKOGSBERG & SMART

Product: Hurricane Lamp

The Hurricane Lamp are hand-blown in Bohemia, home to the world's best glassblowers. Every sample is one-of-a-kind with its own unique variations, creating the most beautiful light possible. It sensuously illuminates a space. You can be confident you will look your best in its glow. The lamp is just stunning on a garden balcony as it is in your bedroom. Light up your night.

Design/Producer

Skogsberg & Smart – a new design company comprising Magnus Skogsberg and Mimmi Smart. The idea for their design company came while they both renovated their own houses from scratch. They started sharing ideas and realized that quite often they were the same, so they made a few pieces of customized interior details for our own houses. And now they are designing for you! Classic designs that you never get tired of – very often simple but with a twist. That is Skogsberg&Smart. Elegant, unique design in combination with high quality production.

www.skogsbergsmart.com



THOMAS SANDELL FOR SKULTUNA

Product: Barbara Bottle opener

Design

Thomas Sandell - architect SAR and SIR, one of Sweden's most highly acclaimed architects and designers. Renowned for many different buildings, interiors and furniture designs, for clients as Ericsson, IKEA of Sweden, OM HEX, Cappellini, NCC, Zero Interiör and many others.

www.sandellsandberg.se

Producer

Timeless design and timeless quality.

For 400 years Skultuna has produced objects of the highest quality design and goods for both everyday use and for special occasions, always with that same sense of quality, function and design. Skultuna today creates tomorrows antiques.

www.skultuna.se



CLAESSON KOIVISTO RUNE FOR SKULTUNA

Product: Basso

Coaster for champagne and wine bottles.

Design

Claesson Koivisto Rune - The Swedish design partnership Claesson Koivisto Rune – CKR- was founded in 1995 as an architectural office but is, in the classic Scandinavian way multi-disciplinary, which means that they practice both architecture and design.

www.ckr.se

Producer

Timeless design and timeless quality.

For 400 years Skultuna has produced objects of the highest quality design and goods for both everyday use and for special occasions, always with that same sense of quality, function and design. Skultuna today creates tomorrows antiques.

www.skultuna.se



OLOF KOLTE FOR SKULTUNA

Product: Bowl

Design

Olof Kolte - Born in Stockholm, Sweden 1964. Graduated from Royal Institute of Technology in Stockholm in 1990, Civil Engineering. Exchange student at Ecole Spéciale des Travaux Publics, Paris 1986-1987. Worked as civil engineer in Mexico City, Malmö (Sweden) and Riga (Latvia) 1990-1995. Designer for David design AB, Malmö (Sweden) on freelance basis since 1991. Guest student at The Royal Academy of Fine Arts, School of Architecture, in Copenhagen, 1995-1996 (Architecture and Design). Master of Art, School of Architecture, Interiors and Furniture at Royal College of Art, London 1998. Own design practice in London 1998-2000, Malmö 2000-. Lecturer at Lund University Industrialdesign LTH, Sweden 2001-

www.olofkoltedesign.com

Producer

Timeless design and timeless quality.

For 400 years Skultuna has produced objects of the highest quality design and goods for both everyday use and for special occasions, always with that same sense of quality, function and design. Skultuna today creates tomorrows antiques.

www.skultuna.se



KARIN JAXELIUS

Design

Karin Jaxelius works with ceramics. After she completed her fine arts degree in ceramic art i Gothenburg, she established her own workshop in Smedjebacken (south Dalarna).

She get inspiration from nature, life and its processes. The contrast between fragility and strength is to be found everywhere in nature.

She has exhibited in Sweden and abroad.

www.jaxelius.se



13B- DANIELSSON & MARMBRANDT

Product

Pop Up Three dimensional shaped polyester fabric. Prototype.

Design

13B Danielsson&Marmbrandt – consists of: Anna Danielsson, textile designer, an expert in textiles, patterns and printing and Eva Marmbrandt, textile designer, an expert in textiles in the public environment. They have worked with textiles for many years in Sweden and abroad where they have acquired unique skills and have a comprehensive knowledge in the use of all kinds of textiles.

www.marmbrandt.se



BJÖRN DAHLSTRÖM FOR SKEPPSHULT

Product: Skeppshult bike V

Small balloon tires, a low-rider frame and lots of hauling attachments are the features Swedish cycling company Skeppshult felt would be most needed in a short-trip urban bike. There are extra-wide package racks (widely used in Sweden) that can fairly easily be positioned into either frame end, and black or silver attaching boxes with lids that can take about a 20-pound load, as well as metal attachable baskets.

Design

Björn Dahlström, Swedish Industrial and Graphic designer, born in 1957. Björn Dahlström has been awarded several times, both national and international. He got the Swedish award Excellent Swedish Design eight times during 1991-1998, Furniture of the year, from the Swedish magazine Sköna Hem, in 1995, Design Plus Prize, Frankfurt, Deutschland in 1996 among other awards. He is represented at the Röhsska museum in Gothenburg, Sweden and Victoria and Albert Museum in London. Björn Dahlström has been working as professor at University College of Arts Crafts and Design and has also been teaching at the Beckmans School of Design in Stockholm.

www.dahlstromdesign.se

Producer

Skeppshultcykeln AB is a privately owned company with approximately 60 employees who manufacture cycles under the SKEPPSHULT name. It is the only company in Sweden to have an unbroken history of manufacturing (welding and painting) frames, building wheels and assembling cycles in its own factory since its foundation in Skeppshult in 1920. Cycles from Skeppshult are renowned for their high quality and good design. As proof of this the Skeppshult cycle is the only cycle to receive the prestigious award of Swedish Design Excellence. Skeppshult was awarded in 1998 for its Z bike, which is a co-operation with Swedish designer Björn Dahlström.

www.skeppshult.se



HEMSLÖJDSPRODUKTER

Product: Iron bowl
Wrought-iron oil-burnt

Design / Producer:
Hemslöjdsprodukter AB
www.hemslöjdsprodukter.se



HEMSLÖJDSPRODUKTER

Product : Circles blanket

It's a jacquard woven blanket made from 100% of the finest New Zealand wool, 130x180 cm.

Design

Magnus Frischenfeldt – a multitalented, equally comfortable renovating a house as sewing curtains. He has worked with interior decoration and design for many years. Magnus is the owner of Hemslöjdsprodukter.

Producer:

Hemslöjdsprodukter AB

www.hemslojdsprodukter.se



FORUM AID

Nordic Architecture, Interiors and Design

Forum AID's ambition is to reflect the range and variation of design and architecture throughout all the Nordic countries, a region characterised by some of the most individual styles of expression in Europe.

Forum AID ignores expected architecture in favour of the innovative. Each three months new trendsetting projects are presented for the first time. Generous space is devoted to portraits of the most pioneering actors in the field in addition to debate, analyses and ranking of the best and worst architecture in the Nordic region just now.

www.forumaid.com



BON

Bon is one of Sweden's most stylish lifestyle magazines, the first choice of trend setters, opinion makers and lovers of the good life. Bon covers the trends in fashion, music, film, art, design and society.

Bon Magazine's international edition is available in all rooms at Nordic Light Hotel.

www.bonmagazine.com



KLÄSSBOLS LINNEVÄVERI

Producer

Linus - towel

Design

Peter Condu's textile designs are internationally famed. In 1970, the American chain store "Lord and Taylor", introduced his work over the entire continent; and for a number of years Peter commuted between Stockholm and New York, having his own shops in both cities. He also started early on to export to Japan and his work is to be found in many public as well as private establishments in different countries; as well as in a number of museums, e.g. the National Museum in Stockholm, the Röhsska Museum of Applied Arts in Gothenburg and the Danish Museum of Applied Arts in Copenhagen.

Producer

Klässbols Linneväveri - Ever since the early 20's has the raw material flax and its refinement directed the Johansson family in Klässbol, situated 20km south of Arvika, Sweden. Their determination and humble belief in quality, their balance between old handicraft and new techniques, their beliefs in what they are doing and that it is the right thing, has spun threads far longer than to the border of Sweden. Napkins and tablecloths from the little village in Värmland have for several years been used at the prestigious Nobel feast. Swedish as well as Norwegian embassies worldwide choose products from Klässbols. They are purveyors to HM the King of Sweden, they have been given the honourable task of hand-weaving the very special royal tablecloth.

www.klassbols.se



KLÄSSBOLS LINNEVÄVERI

Producer

Herr Ask - towel

Design

Margot Barolo "As someone born and bred in the city, I am fascinated by everything that comes straight from nature –raw materials that can be used so immediately to achieve concrete results. Linen has a strength and sheen that survives generations. And weaving is an undervalued craft that is far more complex and more difficult to understand and master than most disciplines. Klässbols preserves a wealth of historic knowledge and has an impressive knack for adapting it to our modern times."

Producer

Klässbols Linneväveri -Ever since the early 20's has the raw material flax and its refinement directed the Johansson family in Klässbol, situated 20km south of Arvika, Sweden. Their determination and humble belief in quality, their balance between old handicraft and new techniques, their beliefs in what they are doing and that it is the right thing, has spun threads far longer than to the border of Sweden. Napkins and tablecloths from the little village in Värmland have for several years been used at the prestigious Nobel feast. Swedish as well as Norwegian embassies worldwide choose products from Klässbols. They are purveyors to HM the King of Sweden, they have been given the honourable task of hand-weaving the very special royal tablecloth.

www.klassbols.se



KLÄSSBOLS LINNEVÄVERI

Producer

Handduken - The Towel

Design

Alf Levin – a young student of 14 years

Producer

Klässbols Linneväveri -Ever since the early 20's has the raw material flax and its refinement directed the Johansson family in Klässbol, situated 20km south of Arvika, Sweden. Their determination and humble belief in quality, their balance between old handicraft and new techniques, their beliefs in what they are doing and that it is the right thing, has spun threads far longer than to the border of Sweden. Napkins and tablecloths from the little village in Värmland have for several years been used at the prestigious Nobel feast. Swedish as well as Norwegian embassies worldwide choose products from Klässbols. They are purveyors to HM the King of Sweden, they have been given the honourable task of hand-weaving the very special royal tablecloth.

www.klassbols.se



SKANDINAVISK HEMSLÖJD

Products

Butterknife and Jewel box in juniper tree made by Scandinavian craftsmen.
Sheep made of juniper tree and wool from New Zealand.

Producer

Skandinavisk Hemslojd

www.skandinaviskhemslojd.se



CARINA SETH ANDERSSON

www.csa.nu/



JONAS LINDHOLM



MIA E GÖRANSSON

www.miaegoransson.com